

2026

Product Book



Motosel Lubricants

Company Overview

Introduction

Motosel Industrial Group, Inc. was established in 1987 as a manufacturer of lubricants and petrochemical products. The company employs advanced methodologies focused on sustainable growth by prioritizing the needs of each client. Motosel strives to build strong relationships by redefining the true meaning of service and product performance.

All products are developed within Motosel's scientific departments, where meticulous attention is given to every detail. This commitment reflects the pride and expertise of the professionals behind each product. We encourage our clients to explore our comprehensive range of lubricant solutions and to consider Motosel Industrial Group as a primary supplier of high-quality, engineered Class A lubricants. We look forward to discussing potential business opportunities with you.

Global network

We have offices and distributors in Canada, United States, China, United Kingdom, United Arab Emirates, India and more.

Vision

To be a trusted global partner by delivering quality, value, and long-term reliability.

Motosel operates locations across Canada



Packaging Lines & Logistics

At Motosel, we pride ourselves on efficient delivery of our lubricants and motor oils. Our vast local and global reach is supported by an interconnected delivery network designed to move products seamlessly. Motosel has direct railroad access to the production facility. We proudly operate our own specialized delivery fleet and provide import/export expertise to our customers.

Featured Products

- **Synthetic Blend Motor Oil**

(protect engine components)

- **Full Synthetic Motor Oil**

(natural gas)

- **Heavy Duty Motor Oil**

(wear protection)

- **Automatic Transmission Fluid**

(excellent performance)

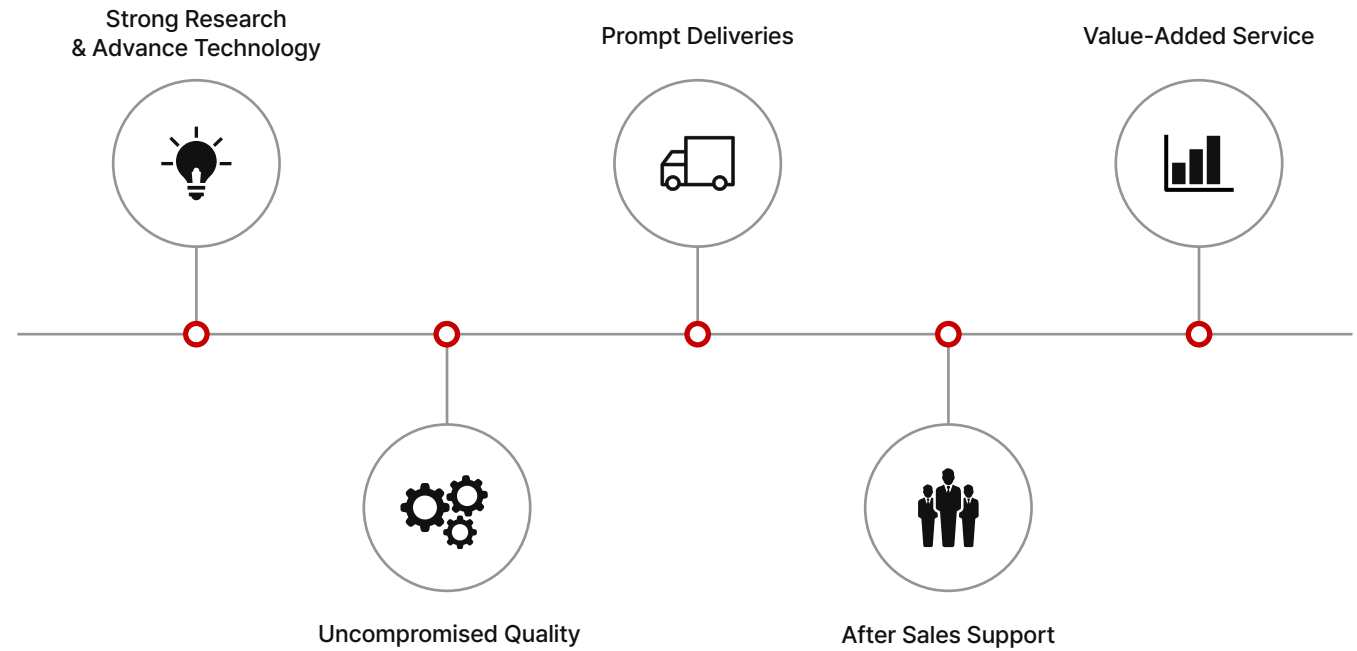
- **Gear Oil**

(reduce oil consumption)

- **Grease**

(prevent sludge)

Performance and Advantages



Advanced Lubrication Solutions

Proven Protection, Powerful Performance

15 Years or 800 000 Kilometers Protection Guaranteed

Long May We Drive. Hit the open road with freedom, excitement, and purpose. Every drive is another opportunity to blaze your own trail. Motosel has been innovating since 1913 to help keep engines better protected so that every driver can ignite their passions. That's why Motosel Platinum is formulated to help you extend the life of your engine with ultimate protection for up to 15 years or 500,000 miles, whichever comes first, guaranteed.

This warranty is in addition to any and all original equipment warranties and does not invalidate them. Motosel will repair or replace any piece of your equipment damaged due to the failure of our lubricant.

*Coverage up to 10 years or 480,000 kilometers (whichever comes first)



Motosel Lubricants

Engineered for peak performance. Premium virgin oil and advanced formulations backed by world-class certifications, delivered swiftly across Canada.

Complete Protection

Engineered for peak performance. Premium virgin oil and advanced formulations backed by world-class certifications, delivered swiftly across Canada.

No brand is trusted more than Motosel

You are busy. You have a business to run, and customers to attend to. That's where Pennzoil comes in. We are committed to providing support to help your business prosper.

Certificates



Performance

Motosel Lubricants – Built for Extreme Drives

Unbeatable engine protection. Superior wear and sludge resistance. Lasting cleanliness. 20-year, 1,200,000 km warranty—peace of mind for every commute, dune, and mountain trail. Drive hard. Drive confident.

Meets and exceeds

Ultra Platinum • Platinum • Euro • High Mileage





Contents

Synthetic Blend Oil	5
Full Synthetic Oil	8
Heavy Duty Diesel Oil	12
ATF (Automatic Transmission Fluid)	13
Gear Oil	15
Grease	16



Synthetic Blend

Recommended for vehicles with 120k+ kilometers

MOTOSEL SP/GF-6 is a premium, synthetic blend motor oil scientifically formulated with ultimate cleaning technology. It works harder to protect than conventional motor oils by preventing dirt and sludge build up for better responsiveness and improved performance, enabling the engine to operate at its full potential right up to the next oil change.

- Provides proven wear protection for engine parts
- Better for severe driving conditions than conventional oil
- Helps prevent sludge and other damaging deposits



Offering greater engine wear protection



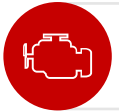
Keeping your engine cleaner



Flowing better in low temperature



Protecting better at high temperatures



Protecting critical turbocharger parts



Synthetic Blend (Conventional & Blended)

Whether choosing a conventional motor oil for your vehicle or a synthetic blend, no other leading motor oil provides better wear protection or helps keep engines cleaner than Motosel.

Industrial Specification

Viscosity	0W-20	5W-20	5W-30
Industry Specification	API: API SP-RC and all previous categories ILSAC GF-7A	API: API SP-RC and all previous categories ILSAC GF-7A	API: API SP-RC and all previous categories ILSAC GF-7A
Chrysler	MS-3695	MS-3695	MS-3695 / MS-13340
Ford	WSS-M2C962-A1	WSS-M2C960-A1	WSS-M2C961-A1
General Motors	Dexos1 Gen3	Dexos1 Gen3	Dexos1 Gen3

*Specifications may vary by viscosity grade. These specifications are to be used as guidelines only. Please refer to your individual vehicle owner's manual for proper viscosity grade and specification of oil to use.

Motor Oils



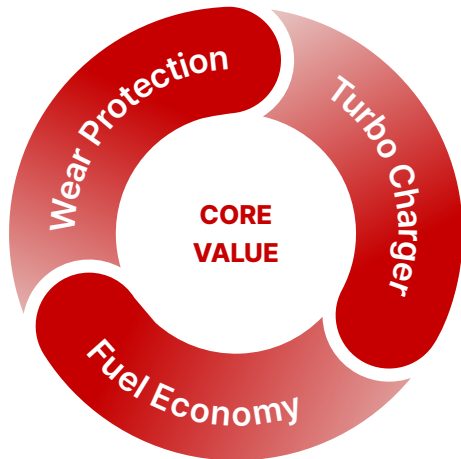
0W-20 / 946mL
#m-0101



5W-20 / 946mL
#m-0201



5W-30 / 946mL
#m-0301



Performance

- Maximize engine protection for ICE and hybrid engines
- Helps keep pistons cleaner than required by the toughest industry standard
- Helps protect engines from loss of power.
- Provides faster low temperature oil flow and protects in extreme heat
- Exceeds the requirements of OEM specifications
- Protect environment
- API SQ-Resources Conserving and all previous categories



Synthetic Blend 0W-20

Motosel SAE 0W-20 engine oil meets or exceeds ILSAC GF-6A and American Petroleum Institute (API) Resource Conserving SP service classifications and is compatible with all prior API categories. This has been field tested to be comparable to most American, Asian and European manufacturers' standards including ACEA C5, API SP Resource Conserving, STJLR.03.5006 and many other OEM's specifications where a full synthetic API SP motor oil is recommended.

Synthetic Blend 5W-20

Motosel SAE 5W-20 engine oil meets or exceeds American Petroleum Institute (API) SP service classification and is recommended for passenger cars, light trucks, and other four-stroke gasoline powered equipment wherever API SP/ ILSAC GF-6 certified oils are required. For all-season use in engines operating on gasoline, high-ethanol gasoline (E-85), propane, or compressed natural gas (CNG).

Synthetic Blend 5W-30

Motosel SAE 5W-30 engine oil meets or exceeds American Petroleum Institute (API) SP service classification (API SP, SN Plus, SN, SM, previous ILSAC GF-6A, GF-5, GF-4) and is recommended for passenger cars, light trucks, and other four-stroke gasoline powered equipment wherever API SP/ ILSAC GF-6 certified oils are required. For all-season use in engines operating on gasoline, high-ethanol gasoline (E-85), propane, or compressed natural gas (CNG).

Characteristics

*Use the same care and handling as for any petroleum product.

Viscosity	Blended	0W-20
API SERVICE	—	SP
API Gravity	ASTM D287	35.92
Flash Point, COC °C/°F	ASTM D92	235/455
Pour Point, °C/°F	ASTM D97	-48/-54.4
Viscosity @ 40°C, cSt	ASTM D445	45.93
Viscosity @ 100°C, cSt	ASTM D445	8.6
Viscosity Index	ASTM D2270	168
CCS, mPa-sec °C max	ASTM D5293	6200 @-35
Total Base No. TBN	ASTM D2896	7.9



Viscosity	Blended	
	Blended	5W-20
API SERVICE	—	SP/GF-6A
API Gravity	ASTM D287	33.48
Flash Point, COC °C/°F	ASTM D92	219/426.2
Pour Point, °C/°F	ASTM D97	-49/-56.2
Viscosity @ 40°C, cSt	ASTM D445	50.3
Viscosity @ 100°C, cSt	ASTM D445	8.7
Viscosity Index	ASTM D2270	152
CCS, mPa-sec °C max	ASTM D5293	6200 @-30
Total Base No. TBN	ASTM D2896	7.1



Viscosity	Blended	5W-30
API SERVICE	—	SP/GF-6A
API Gravity	ASTM D287	33.26
Flash Point, COC °C/°F	ASTM D92	221/429.8
Pour Point, °C/°F	ASTM D97	-48/-54.4
Viscosity @ 40°C, cSt	ASTM D445	60.71
Viscosity @ 100°C, cSt	ASTM D445	10.23
Viscosity Index	ASTM D2270	157
CCS, mPa-sec °C max	ASTM D5293	6200 @-30
Total Base No. TBN	ASTM D2896	7.0



Full Synthetic

• Engine life and performance

Motoseal SP/GF-6 is a premium, full synthetic motor oil meets or exceeds car manufacturers ILSAC GF-6 and American Petroleum Institute API Resource Conserving SP service classification and have been field tested to be comparable to American, European and Japanese manufacturers' standards: ACEA A1/B1 & A5/B5, Ford WSS-M2C930A and WSS-M2C945A (5W-20), and WSS-M2C929A and WSS-M2C946A (5W-30); Chrysler MS 6395, dexos, and GM 6094M and other specifications where a full synthetic SN/SP motor oil is recommended.

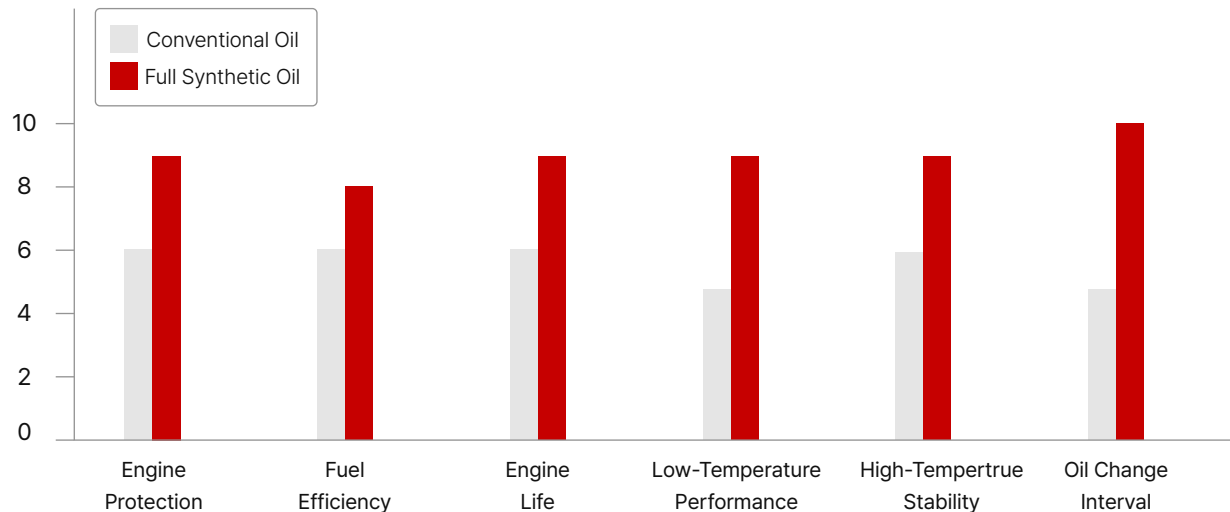
Motoseal Dexos1™ GEN 3 full synthetic motor oils are premium multi-grade motor oils formulated from select low-friction, full synthetic base stocks and an advanced technology additive system licensed by General Motors to meet their Global Engine Oil Specification. It provides excellent oxidation stability, superior resistance to sludge formation and varnish deposits, reduces friction and wear at start-up and protects your engine even under the toughest driving conditions.



Full synthetic oil provides better protection, efficiency, and durability across all driving conditions. For maximum engine performance and longevity, full synthetic oil is the clear winner.

Conventional Oil vs Full Synthetic Oil (Side-by-Side Comparison)

<p>Engine Protection Protects engine components by reducing friction and preventing wear under extreme conditions</p>	<p>Fuel Efficiency Improves fuel efficiency by reducing internal engine</p>
<p>Engine Life Extends the lifespan of the engine by keeping it clean and minimizing long-term damage</p>	<p>Low-Temperature Performance Ensures smooth engine start and quick oil flow in cold conditions.</p>
<p>High-Temperature Performance Maintains viscosity and performance even under high heat and stress.</p>	<p>Oil Change Interval Allows longer oil change intervals due to slower</p>



Full Synthetic (Natural Gas)

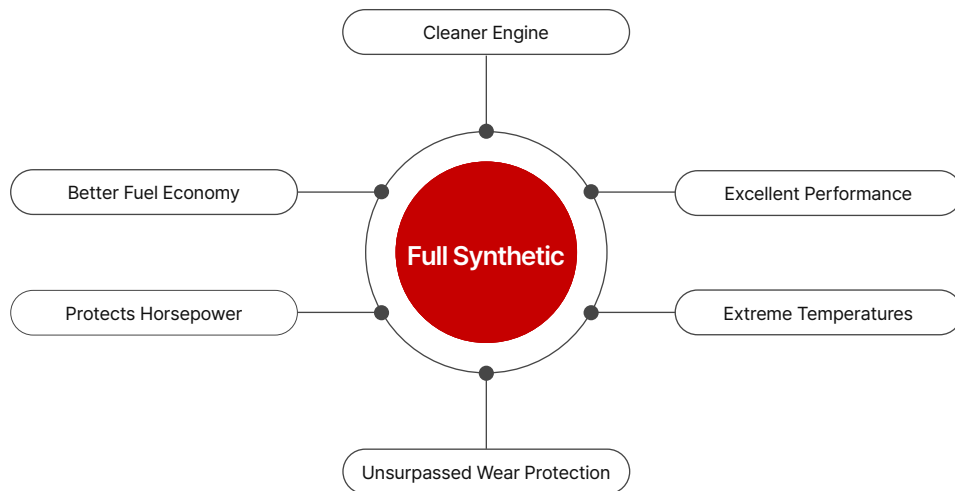
When it comes to torturous driving conditions, trust the unbeatable engine protection of Motosel full synthetic oils. That means you're getting unbeatable wear- and sludge- protection as well as unbeatable cleanliness.

Industrial Specification

Viscosity	0W-20	0W-40	5W-20	5W-30	10W-30
Industry Specification	API: API SP-RC and all previous categories ILSAC GF-7A	API: API SP	API: API SP-RC and all previous categories ILSAC GF-7A	API: API SP-RC and all previous categories ILSAC GF-7A	API: API SP-RC and all previous categories ILSAC GF-7A
Chrysler	MS-3695	MS-A0921 (SRT)	MS-3695	MS-3695 / MS-13340	MS-3695
Ford	WSS-M2C962-A1	N/A	WSS-M2C961-A1	WSS-M2C960-A1	WSS-M2C961-A1
General Motors	Dexos1 Gen3	Dexos R	Dexos1 Gen3	Dexos1 Gen3	N/A

*Specifications may vary by viscosity grade. These specifications are to be used as guidelines only. Please refer to your individual vehicle owner's manual for proper viscosity grade and specification of oil to use.

Characteristics



Motor Oils



Full Synthetic 0W-20

Motosel Full Synthetic SAE 0W-20 Motor Oil is a superior quality multi-grade motor oil designed with a state-of-the-art low friction additive system for maximum engine protection even under the toughest driving conditions. It outperforms conventional motor oil, reduces friction and wear at start-up and protects your engine against performance robbing sludge and varnish deposits.

Full Synthetic 0W-40

Motosel SAE 0W-40 engine oil meets or exceeds American Petroleum Institute (API) SP service classification and is recommended for passenger cars, light trucks, and other four-stroke gasoline powered equipment wherever API SP/ ILSAC GF-7 certified oils are required. For all-season use in engines operating on gasoline, high-ethanol gasoline (E-85), propane, or compressed natural gas (CNG).

Full Synthetic 5W-20

Motosel Full Synthetic SAE 5W-20 Motor Oil is a premium multi-grade oil engineered with a state-of-the-art low-friction additive system for maximum engine protection—even under the toughest driving conditions. It outperforms conventional oils, minimizes start-up friction and wear, and shields your engine from performance-robbing sludge and varnish.

Characteristics

*Use the same care and handling as for any petroleum product.

Viscosity	Full Synthetic	0W-20
API SERVICE	—	SP/GF-6A
API Gravity	ASTM D287	36.2
Flash Point, COC °C/°F	ASTM D92	235/455
Pour Point, °C/°F	ASTM D97	-48/-54.4
Viscosity @ 40°C, cSt	ASTM D445	45.93
Viscosity @ 100°C, cSt	ASTM D445	8.6
Viscosity Index	ASTM D2270	168
CCS, mPa-sec °C max	ASTM D5293	6200 @-35
Total Base No. TBN	ASTM D2896	7.0



Viscosity	Full Synthetic	0W-40
API SERVICE	—	SP
API Gravity	ASTM D287	33.48
Flash Point, COC °C/°F	ASTM D92	219/420
Pour Point, °C/°F	ASTM D97	-50/-55.3
Viscosity @ 40°C, cSt	ASTM D445	50.3
Viscosity @ 100°C, cSt	ASTM D445	8.7
Viscosity Index	ASTM D2270	152
CCS, mPa-sec °C max	ASTM D5293	6200 @-30
Total Base No. TBN	ASTM D2896	6.8



Viscosity	Full Synthetic	5W-30
API SERVICE	—	SP/GF-6A
API Gravity	ASTM D287	33.26
Flash Point, COC °C/°F	ASTM D92	221/429.8
Pour Point, °C/°F	ASTM D97	-48/-54.4
Viscosity @ 40°C, cSt	ASTM D445	60.71
Viscosity @ 100°C, cSt	ASTM D445	10.23
Viscosity Index	ASTM D2270	157
CCS, mPa-sec °C max	ASTM D5293	6200 @-30
Total Base No. TBN	ASTM D2896	7.0

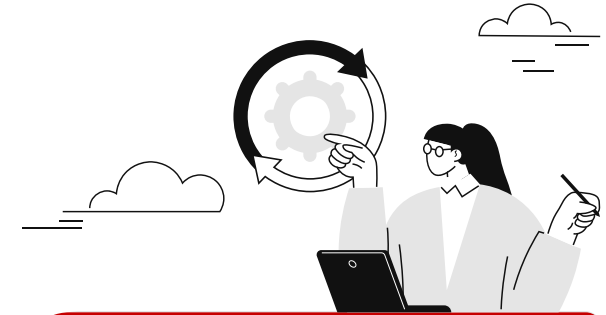


Full Synthetic 5W-30

Motosel SAE 5W-30 engine oil is a superior quality multi-grade motor oil designed with a state-of-the-art low friction additive system for maximum engine protection even under the toughest driving conditions. It outperforms conventional motor oil, reduces friction and wear at start-up and protects your engine against performance robbing sludge and varnish deposits.

Full Synthetic 5W-40

Motosel SAE 5W-40 engine oil meets or exceeds MB 229.31, American Petroleum Institute (API) SP service classifications and is compatible with all prior API categories. Motosel Full Synthetic SAE 5W-40 has been field tested to be comparable to most American, Asian and European manufacturers' standards including MB 229.51, Ford WSS-M2C917A, Porsche A40, Renault RN 710, VW 505/502, and many other OEM's specifications where a full synthetic API SP motor oil is recommended.



Essential Lubricant for Engine Performance



Characteristics

*Use the same care and handling as for any petroleum product.

Viscosity	Full Synthetic	5W-30
API SERVICE	—	SP
API Gravity	ASTM D287	35.92
Flash Point, COC °C/°F	ASTM D92	235/455
Pour Point, °C/°F	ASTM D97	-48/-54.4
Viscosity @ 40°C, cSt	ASTM D445	45.93
Viscosity @ 100°C, cSt	ASTM D445	8.6
Viscosity Index	ASTM D2270	168
CCS, mPa-sec °C max	ASTM D5293	6200 @-35
Total Base No. TBN	ASTM D2896	7.9



Viscosity	Full Synthetic	5W-40
API SERVICE	—	SP/GF-6A
API Gravity	ASTM D287	33.48
Flash Point, COC °C/°F	ASTM D92	219/426.2
Pour Point, °C/°F	ASTM D97	-49/-56.2
Viscosity @ 40°C, cSt	ASTM D445	50.3
Viscosity @ 100°C, cSt	ASTM D445	8.7
Viscosity Index	ASTM D2270	152
CCS, mPa-sec °C max	ASTM D5293	6200 @-30
Total Base No. TBN	ASTM D2896	7.1



Diesel Fluids

Heavy Duty

Motosel Heavy Duty 15W-40 CK-4/SN is a premium, all-purpose engine oil designed for both diesel and gasoline engines across automotive, heavy-duty trucking, construction, mining, and agricultural applications.

Engine Fluid & Characteristics



946mL

5 L

Viscosity	Advanced	15W-40
API SERVICE	—	CK-4
API Gravity	ASTM D287	33.48
Flash Point, COC °C/°F	ASTM D92	219/426.2
Pour Point, °C/°F	ASTM D97	-49/-56.2
Viscosity @ 40°C, cSt	ASTM D445	50.3
Viscosity @ 100°C, cSt	ASTM D445	8.7
Viscosity Index	ASTM D2270	152
CCS, mPa-sec °C max	ASTM D5293	6200 @-30
Total Base No. TBN	ASTM D2896	7.1



Synthetic Blend Diesel Fluids

Heavy Duty Diesel Engine Fluid is designed and formulated to provide improved performance compared to traditional and semi-synthetic products. It is suitable for virtually all modern low-emission heavy duty engines and older hard-working diesel engines. With its wide range of specifications and approvals from many of the world's leading engine makers, it is an excellent choice for on-highway fleets, general haul, construction, agriculture, public-transport operators and diesel pick-up trucks.



Protect and keep heavy-duty engines running efficiently under tough conditions

Triple Protection Fluids

Triple Protection Fluid is designed to provide hardworking protection that adapts to your driving conditions. Suitable for virtually all modern low-emission heavy duty engines and older hard working diesel engines.

*Protection against engine wear, deposits, and a significant improved resistance to oil breakdown under high temps.



Improves performance, durability, and efficiency



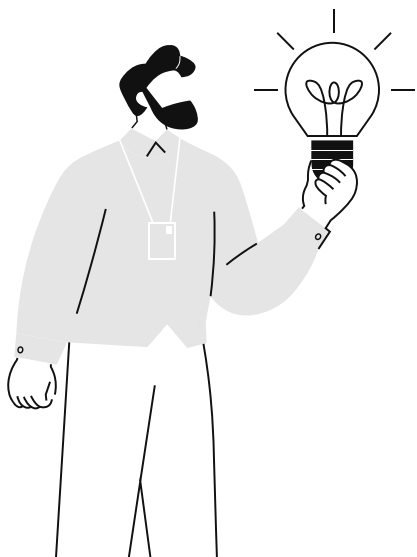
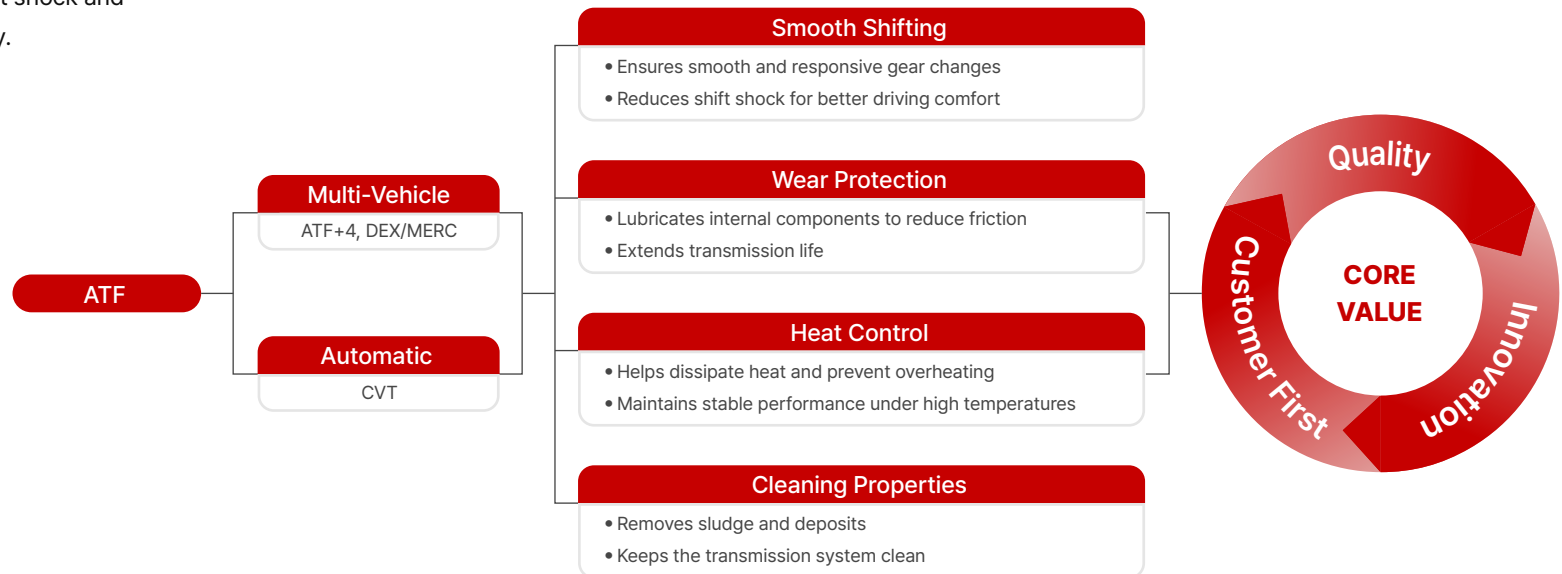
Automatic Transmission Fluid

Motosel offers a wide range of automatic transmission fluids (ATF) designed to meet the specifications of most vehicle manufacturers, making it easy to choose the right product for your vehicle. For multi-vehicle applications, Motosel ATF is compatible with a wide variety of brands and is suitable for both new and high-mileage vehicles, helping to protect seals and reduce leaks. For modern vehicles that require low-viscosity fluids, Valvoline Dexron VI / Mercon LV ATF is engineered to support newer transmission systems, improve fuel efficiency, and deliver smoother, more consistent shifting. In addition, Valvoline also provides OEM-specific solutions such as ATF+4, which is designed specifically for Chrysler, Dodge, and Jeep vehicles, helping to minimize shift shock and enhance overall transmission durability.

Features

- We are committed to delivering high-performance products that meet or exceed industry standards, ensuring reliability and customer satisfaction.
- We continuously develop advanced solutions to improve performance, efficiency, and meet the evolving needs of modern vehicles.
- We prioritize our customers by providing trusted products, clear guidance, and dependable support to help them make the right choices.

Performance



Automatic Transmission Fluid (ATF)

ATF(Automatic Transmission Fluid) has been uniquely engineered to meet and exceed the requirements of (FCA) Fiat Chrysler automatic transmissions and is officially licensed and approved for all ATF applications.

Meet and Recommended Applications

ATF	ATF+3,+4	CVT	MV ATF
Applications	Mopar ATF+ MS 7176* Mopar ATF+2 MS 7176 Mopar ATF+3 Mopar ATF+4	DEXRON®-III MERCON®LV JASO 1A, 2A Allison C-4 Nissan®M Ford MERCON® V	Ford MERCON® Nissan® Matic Fluids Hyundai/Kia SP-II/III/IV Allison® C-3, C-4 Volvo CE 97340 Honda® Z-1

*Specifications may vary by viscosity grade. These specifications are to be used as guidelines only. Please refer to your individual vehicle owner's manual for proper viscosity grade and specification of oil to use.

Engine Fluids



ATF +3,+4 / 946mL
#m-0701

5W-20 / 946mL
#m-0801

5W-30 / 946mL
#m-0901

Characteristics

*Use the same care and handling as for any petroleum product.

Viscosity	Synthetic	ATF+3,+4
API SERVICE	—	SP
API Gravity	ASTM D287	35.92
Flash Point, COC °C/°F	ASTM D92	235/455
Pour Point, °C/°F	ASTM D97	-48/-54.4
Viscosity @ 40°C, cSt	ASTM D445	45.93
Viscosity @ 100°C, cSt	ASTM D445	8.6
Viscosity Index	ASTM D2270	168
CCS, mPa-sec °C max	ASTM D5293	6200 @-35
Total Base No. TBN	ASTM D2896	7.9



946 mL
#M-0701

Viscosity	Synthetic	CVT
API SERVICE	—	SP/GF-6A
API Gravity	ASTM D287	33.48
Flash Point, COC °C/°F	ASTM D92	219/426.2
Pour Point, °C/°F	ASTM D97	-49/-56.2
Viscosity @ 40°C, cSt	ASTM D445	50.3
Viscosity @ 100°C, cSt	ASTM D445	8.7
Viscosity Index	ASTM D2270	152
CCS, mPa-sec °C max	ASTM D5293	6200 @-30
Total Base No. TBN	ASTM D2896	7.1



946 mL 4 L
#M-0801 #M-0802

Viscosity	Synthetic	MV ATF
API SERVICE	—	SP/GF-6A
API Gravity	ASTM D287	33.26
Flash Point, COC °C/°F	ASTM D92	221/429.8
Pour Point, °C/°F	ASTM D97	-48/-54.4
Viscosity @ 40°C, cSt	ASTM D445	60.71
Viscosity @ 100°C, cSt	ASTM D445	10.23
Viscosity Index	ASTM D2270	157
CCS, mPa-sec °C max	ASTM D5293	6200 @-30
Total Base No. TBN	ASTM D2896	7.0



946 mL
#M-0901

Gear Oil

Motosel Gear Oils combine a premium performance gear oil additive package with a high quality synthetic base stock. The result is a gear oil that helps provide excellent low temperature fluidity for safe lubrication during very low temperature transmission or gearbox startup, and also aids in maintaining a thick protective oil film during extremely hot operating conditions. Fluid flow at cold temperatures is important to shift characteristics and lubrication of gear oils helping prevent wear and easing driving effort.

*Performance Level - API service classification GL-5

Engine Fluids & Characteristics



75W-80 / 946mL
#m-0210



5W-20 / 946mL
#m-0211

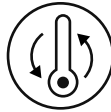
Conventional Oil vs Full Synthetic Oil (Side-by-Side Comparison)



Anti-wear characteristics provide tough, hard working gear oil plus extended oil life



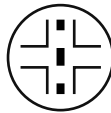
Channeling resistance at low temperature



Excellent thermal stability



Enhanced anti-oxidation characteristics



Suitable for heavy duty gears under severe loads



Compatible with the majority of seals material

Viscosity	Blended	75W-80
API SERVICE	—	GL-5
API Gravity	ASTM D287	33.48
Flash Point, COC °C/°F	ASTM D92	219/426.2
Pour Point, °C/°F	ASTM D97	-49/-56.2
Viscosity @ 40°C, cSt	ASTM D445	50.3
Viscosity @ 100°C, cSt	ASTM D445	8.7
Viscosity Index	ASTM D2270	152
CCS, mPa-sec °C max	ASTM D5293	6200 @-30
Total Base No. TBN	ASTM D2896	7.1



946 mL
#M-0210

Viscosity	Blended	75W-90
API SERVICE	—	GL-5
API Gravity	ASTM D287	33.48
Flash Point, COC °C/°F	ASTM D92	219/426.2
Pour Point, °C/°F	ASTM D97	-49/-56.2
Viscosity @ 40°C, cSt	ASTM D445	50.3
Viscosity @ 100°C, cSt	ASTM D445	8.7
Viscosity Index	ASTM D2270	152
CCS, mPa-sec °C max	ASTM D5293	6200 @-30
Total Base No. TBN	ASTM D2896	7.1



946 mL
#M-0211



5 L
#M-0212

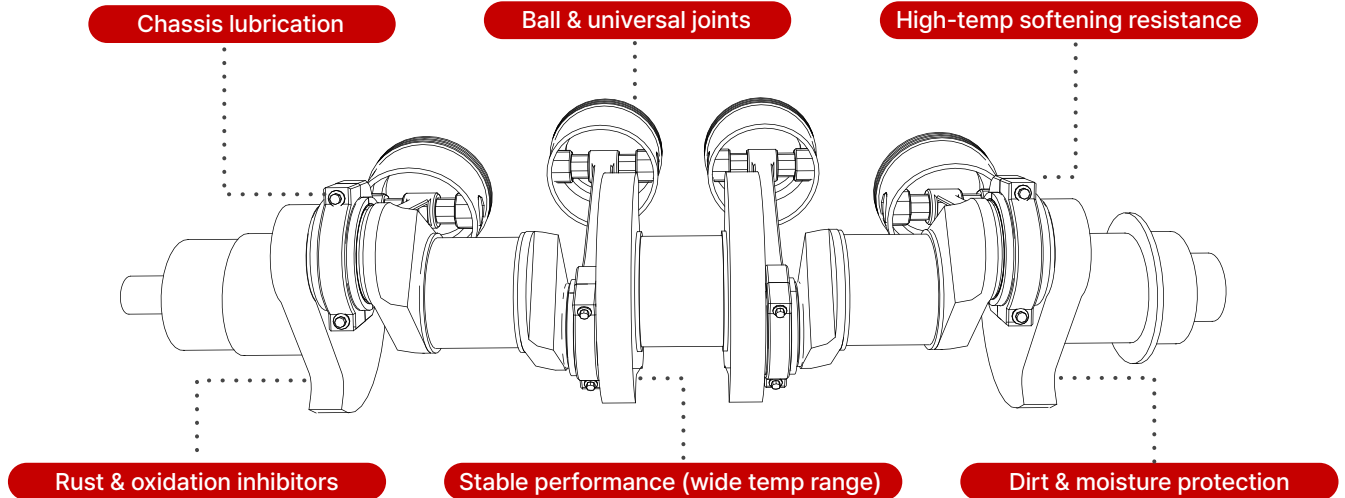
Multi-purpose

Grease

Motosel EP2 Multi-Purpose Lithium Grease is a NLGI 2, lithium based, water resistant grease for automotive and light to medium trucks, farm and industrial applications. It is recommended for automotive chassis lubrication points, ball joints and universal joints, and resists softening at high operating temperatures. It seals out dirt and moisture contamination, is formulated with rust and oxidation inhibitors, and offers good stability over its operating range.

*Meets requirements of NLGI GC-LB

Features



Grease & Characteristics



Grease EP2 / 14 oz
#m-0310

Technical Data	Applications	Methods	Technical Data	Applications	Methods
Penetration @77°F	—	—	Elastomer CR, 70 Hr., at 100 °C	—	ASTM D 1831
Worked 60 Strokes	279	ASTM D 217	Volume Change %	279	ASTM D 4170
Worked 10,000 Strokes	284	ASTM D 217	Hardness Change %	284	ASTM D 2509
Worked 100,000 Strokes	287	ASTM D 217	Rust Prevention Rating, Salt Water	-3	ASTM D 1743
Drop Point (°C/°F)	288(550)	2	Rust Prevention Rating, DI Water	2.8	—
Roll Stability Penetration, % Change	293 (+5)	ASTM D 1831	Roll Stability Penetration, % Change	Pass	Pass
Low Temperature Mobility, US Steel	—	—	Water Washout @ 175°F, %	0.5	—
Fafnir Bearing Weight Loss 22Hr	—	ASTM D 4170	Oil Separation, % Loss	0.5	—
Timken OK Load lbs	65	ASTM D 2509	Viscosity @ 40 °C, cSt	170	ASTM D 445





Motosel Lubricants